



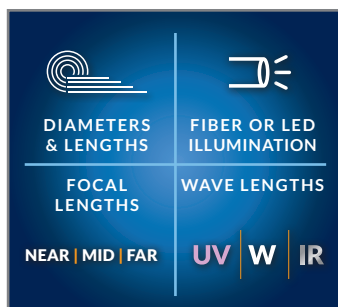
MULTIPLE DIAMETERS

Available in lengths from 1.0m to 8.0m to suit any application. All insertion tubes feature our patented EasyGlide, 4-layer Tungsten sheathing for smooth entry and exit, and are IP 67 rated for rugged durability.



INDUSTRY-FIRST MINI-JOYSTICKS

The VJ-4 user interface is designed to enable maximum functionality with minimal effort. Use the mini-joysticks OR touchscreen to navigate all menus and adjust all settings. No feature-rich borescope is easier or more intuitive to use.



CUSTOM OPTIONS TO FIT EVERY APPLICATION

With a variety of diameters and lengths available, along with focal length and illumination options, you can have a borescope perfectly tailored to your specific inspection requirements.



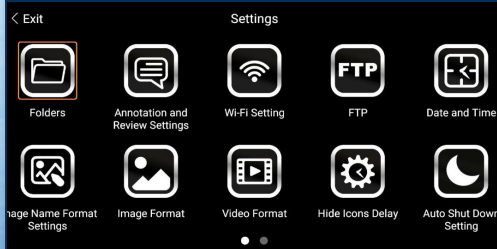
UNRIVALED SERVICE AND EXPERTISE

The VJ-4 is brought to you by the same team of borescope experts that changed the industry 15 years ago with the world's first mechanically articulating, joystick-controlled video borescope. Find out why we are the #1 seller of borescopes in the US.

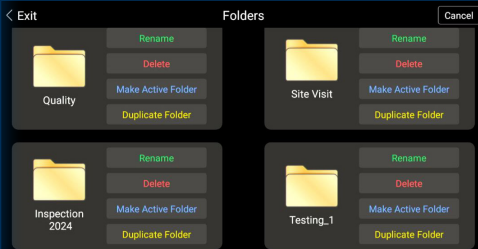


**RUGGEDIZED
CASE & ACCESSORIES
INCLUDED WITH EVERY
BORESCOPE WE SELL**

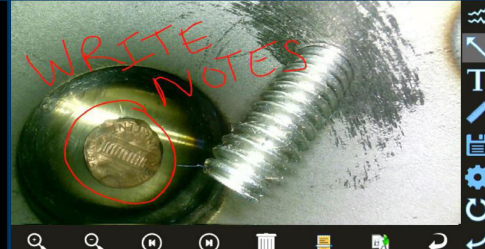
WIDE RANGE OF SETTINGS



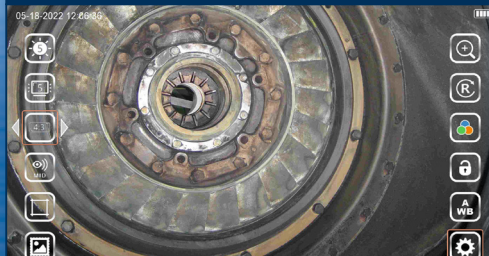
EASY ORGANIZATION & STORAGE



ON-SCREEN ANNOTATION



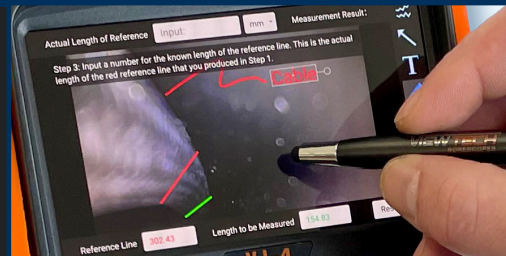
INSTANT ACCESS TO KEY FUNCTIONS



UV AND WHITE LIGHT FLASHLIGHTS



TOUCH-SCREEN OR STYLUS INTERFACE



INSERTION TUBE	Outer Diameter	1.7mm
	Length	1.0m
	Exterior Material	Abrasion-resistant, stainless steel
	Chemical Compatibility	Water, machine oil, heating oil, diesel, 3.5% saline concentrate
	Articulation Range	130°±10° backward (1.0m)
OPTICS	Angle of View	120°
	Depth of Field	3.0mm - 50.0mm
	Effective Pixels	160,000 pixels
	Illumination Method	4 Super high-intensity white LEDs
	Illumination Output	≤ 8,000lux
BASE UNIT	Display Monitor	5.5" OLED touch screen
	Articulation Control	Thumb-actuated, mechanical rocker
	Joystick Lock	Automatic
	Brightness Control	10-step LED brightness adjustment
	Control Buttons	Two multi-function mini joysticks and left/right buttons
	Playback	Photos, videos (w/wo audio), thumbnail view
	Audio / Microphone	3.5mm port
	Removable Storage	All media captured on removable SD Card. Base Unit has no internal media storage capabilities.
	Data I/O ports	SD card, HDMI, USB Type C
	Battery	Two 18650B PCB-Protected Li-ion batteries (rechargeable)
	Operating Method	One handed, portable
	Dimensions	13.6" x 6.2" x 7.3"
	Weight	2.09 lbs. / .95 kg
MENU FUNCTIONS & OPTIONS	User Interface	Pop-up menu operation, menu navigation, touchscreen
	File Management	Photo and video recording, playback, thumbnail preview, delete
	Image Control	Image freeze, image flip, zoom in/out
	Image Format	BMP, PNG or JPG
	Video Format	AVI or MP4
	Language	English, French, Spanish
OPERATING LIMITS	Run Time	≤ 3 Hours
	Operating Temp. Base Unit	-20 - 50°C, -4 - 122°F
	Operating Temp. Insertion Tube	-20 - 70°C, -4 - 158°F
	IP Rating, Insertion Tube	IP67