

WiFi Enabled
(Optional)



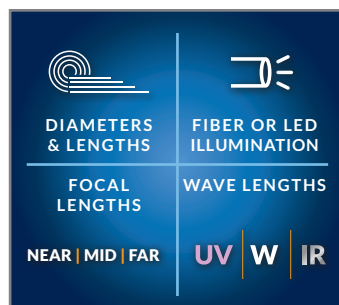
MULTIPLE DIAMETERS

Available in lengths from 1.0m to 8.0m to suit any application. All insertion tubes feature our patented EasyGlide, 4-layer Tungsten sheathing for smooth entry and exit, and are IP 67 rated for rugged durability.



INDUSTRY-FIRST MINI-JOYSTICKS

The VJ-4 user interface is designed to enable maximum functionality with minimal effort. Use the mini-joysticks OR touchscreen to navigate all menus and adjust all settings. No feature-rich borescope is easier or more intuitive to use.



CUSTOM OPTIONS TO FIT EVERY APPLICATION

With a variety of diameters and lengths available, along with focal length and illumination options, you can have a borescope perfectly tailored to your specific inspection requirements.



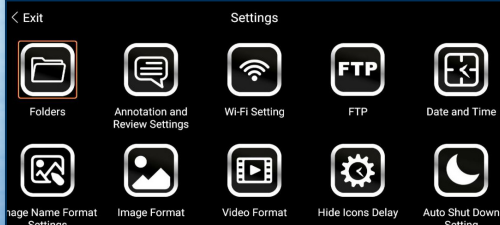
UNRIVALED SERVICE AND EXPERTISE

The VJ-4 is brought to you by the same team of borescope experts that changed the industry 15 years ago with the world's first mechanically articulating, joystick-controlled video borescope. Find out why we are the #1 seller of borescopes in the US.

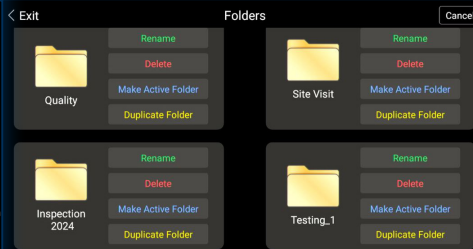


**RUGGEDIZED
CASE & ACCESSORIES
INCLUDED WITH EVERY
BORESCOPE WE SELL**

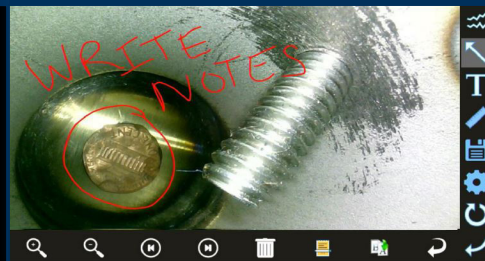
WIDE RANGE OF SETTINGS



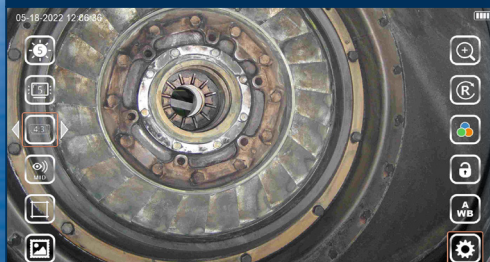
EASY ORGANIZATION & STORAGE



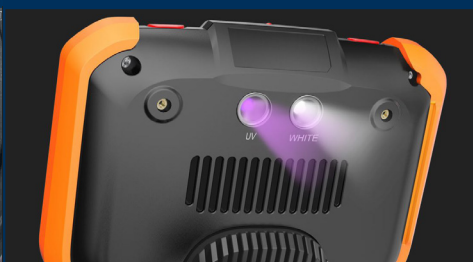
ON-SCREEN ANNOTATION



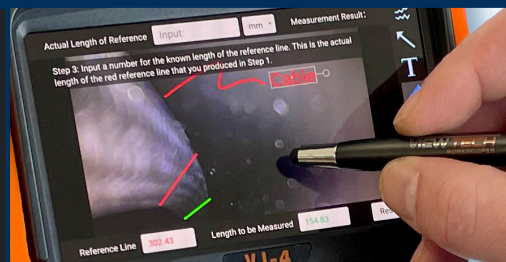
INSTANT ACCESS TO KEY FUNCTIONS



UV AND WHITE LIGHT FLASHLIGHTS



TOUCH-SCREEN OR STYLUS INTERFACE



INSERTION TUBE	Outer Diameter	2.2mm	
	Length	1.0, 1.5m or 2.0m	
	Exterior Material	Tungsten EasyGlide, crush-resistant	
	Chemical Compatibility	Water, machine oil, heating oil, diesel, 3.5% saline concentrate	
	Articulation Range	130°±10° backward (1.0m) 120°±10° backward (1.5m) 100°±10° backward (2.0m)	
OPTICS	Angle of View	120°	
	Depth of Field	3.0mm - 50.0mm	
	Effective Pixels	160,000 pixels	
	Illumination Method	4 Super high-intensity white LEDs	
	Illumination Output	≤ 8,000lux	
BASE UNIT	Display Monitor	5.5" OLED touch screen	
	Articulation Control	Thumb-actuated, mechanical rocker	
	Joystick Lock	Automatic	
	Brightness Control	10-step LED brightness adjustment	
	Control Buttons	Two multi-function mini joysticks and left/right buttons	
	Playback	Photos, videos (w/wo audio), thumbnail view	
	Audio / Microphone	3.5mm port	
	Removable Storage	All media captured on removable SD Card. Base Unit has no internal media storage capabilities.	
	Data I/O ports	SD card, HDMI, USB Type C	
	Battery	Two 18650B PCB-Protected Li-ion batteries (rechargeable)	
	Operating Method	One handed, portable	
	Dimensions	13.6" x 6.2" x 7.3"	
	Weight	2.09 lbs. / .95 kg	
MENU FUNCTIONS & OPTIONS	User Interface	Pop-up menu operation, menu navigation, touchscreen	
	File Management	Photo and video recording, playback, thumbnail preview, delete	
	Image Control	Image freeze, image flip, zoom in/out	
	Image Format	BMP, PNG or JPG	
	Video Format	AVI or MP4	
	Language	English, French, Spanish	
OPERATING LIMITS	Run Time	≤ 3 Hours	
	Operating Temp. Base Unit	-20 - 50°C, -4 - 122°F	
	Operating Temp. Insertion Tube	-20 - 70°C, -4 - 158°F	
	IP Rating, Insertion Tube	IP67	