

WiFi Enabled
(Optional)



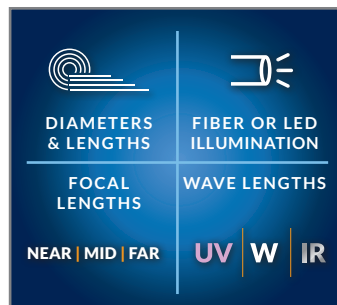
MULTIPLE DIAMETERS AND LENGTHS

Available in lengths 1.0m to 8.0m. The dual camera assists in viewing straight ahead and 90 degrees. Users can switch between the two cameras while keeping the borescope inside the inspection area.



INDUSTRY-FIRST MINI-JOYSTICKS

The VJ-4 user interface is designed to enable maximum functionality with minimal effort. Use the mini-joysticks OR touchscreen to navigate all menus and adjust all settings. No feature-rich borescope is easier or more intuitive to use.



CUSTOM OPTIONS TO FIT EVERY APPLICATION

With a variety of diameters and lengths available, along with focal length and illumination options, you can have a borescope perfectly tailored to your specific inspection requirements.



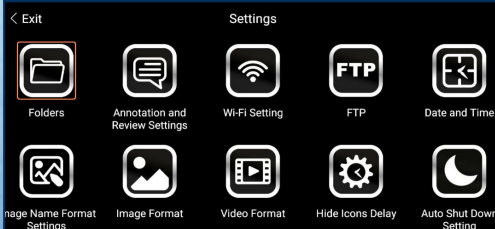
UNRIVALED SERVICE AND EXPERTISE

The VJ-4 is brought to you by the same team of borescope experts that changed the industry 15 years ago with the world's first mechanically articulating, joystick-controlled video borescope. Find out why we are the #1 seller of borescopes in the US.

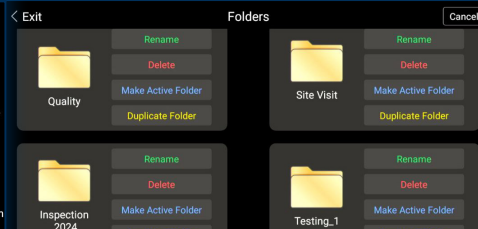


**RUGGEDIZED
CASE & ACCESSORIES
INCLUDED WITH EVERY
BORESCOPE WE SELL**

WIDE RANGE OF SETTINGS



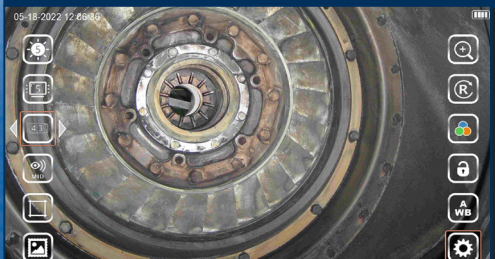
EASY ORGANIZATION & STORAGE



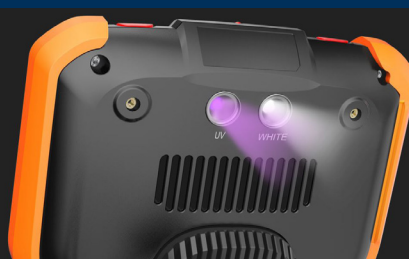
ON-SCREEN ANNOTATION



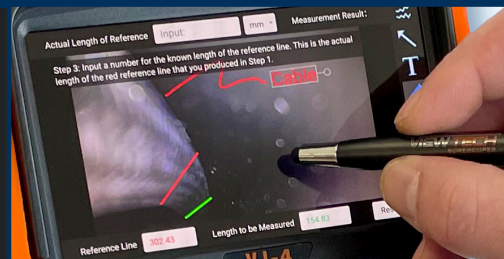
INSTANT ACCESS TO KEY FUNCTIONS



UV AND WHITE LIGHT FLASHLIGHTS



TOUCH-SCREEN OR STYLUS INTERFACE



INSERTION TUBE	Outer Diameter	3.9mm
	Length	1.5m or 3.0m
	Exterior Material	Tungsten EasyGlide, crush-resistant
	Chemical Compatibility	Water, machine oil, heating oil, diesel, 3.5% saline concentrate
	Articulation Range	360° around, 170±10° backward (1.5m) 120±10° backward (3.0m)
OPTICS	Angle of View	110° (front) 110° (side)
	Depth of Field	8.0mm-100.0mm (front) 5.0mm-50mm (side)
	Effective Pixels	921,600 pixels
	Illumination Method	6 Super high-intensity white LEDs
	Illumination Output	Front ≤ 10,000lux Side ≤ 10,000lux
BASE UNIT	Display Monitor	5.5" OLED touch screen
	Articulation Control	Thumb-actuated, mechanical rocker
	Joystick Lock	Automatic
	Brightness Control	10-step LED brightness adjustment
	Control Buttons	Two multi-function mini joysticks and left/right buttons
	Playback	Photos, videos (w/wo audio), thumbnail view
	Audio / Microphone	3.5mm port
	Removable Storage	All media captured on removable SD Card. Base Unit has no internal media storage capabilities.
	Data I/O ports	SD card, HDMI, USB Type C
	Battery	Two 18650B PCB-Protected Li-ion batteries (rechargeable)
	Operating Method	One handed, portable
	Dimensions	13.6" x 6.2" x 7.3"
	Weight	2.09 lbs. / .95 kg
MENU FUNCTIONS & OPTIONS	User Interface	Pop-up menu operation, menu navigation, touchscreen
	File Management	Photo and video recording, playback, thumbnail preview, delete
	Image Control	Image freeze, image flip, zoom in/out
	Image Format	BMP, PNG or JPG
	Video Format	AVI or MP4
	Language	English, French, Spanish
OPERATING LIMITS	Run Time	≤ 3 Hours
	Operating Temp. Base Unit	-20 – 50°C, -4 – 122°F
	Operating Temp. Insertion Tube	-20 – 70°C, -4 – 158°F
	IP Rating, Insertion Tube	IP67