

WiFi Enabled



HDMI Out

32GB SD Card and  
USB Connectivity

Picture-in-Picture  
Front & Side  
Camera Display

Video Start-Stop

Mini Joysticks  
For Easy Navigation

Ergonomic  
Pistol Grip  
Design

Rechargeable  
Li-ion Battery  
3 Hour Runtime

Detachable Base Plate  
(Magnetic Version Available)

Built-in Stylus Holder  
(Stylus Included)

On-Board Image Processing

2.5X Digital Zoom

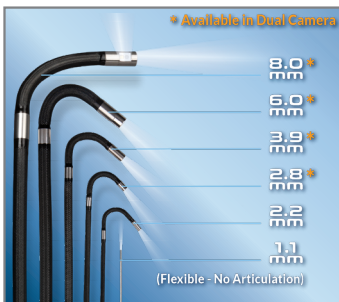
HD OLED Touch Screen

Joystick-Controlled, 360°  
Direct Response Articulation

Image Capture Trigger

Tungsten Braided  
IP 67 Insertion Tube

Dual Camera:  
Forward View  
and Side View  
Cameras



\* Available in Dual Camera

8.0 mm  
6.0 mm  
3.9 mm  
2.8 mm  
2.2 mm  
1.1 mm  
(Flexible - No Articulation)

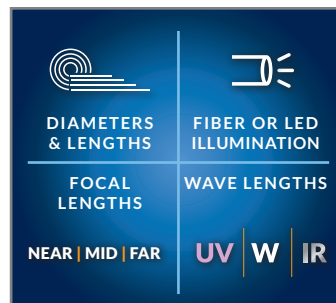
**MULTIPLE DIAMETERS  
AND LENGTHS**

Available in lengths 1.0m to 8.0m. The dual camera assists in viewing straight ahead and 90 degrees. Users can switch between the two cameras while keeping the borescope inside the inspection area.



**INDUSTRY-FIRST MINI-  
JOYSTICKS**

The VJ-4 user interface is designed to enable maximum functionality with minimal effort. Use the mini-joysticks OR touchscreen to navigate all menus and adjust all settings. No feature-rich borescope is easier or more intuitive to use.



DIAMETERS  
& LENGTHS



FIBER OR LED  
ILLUMINATION

FOCAL  
LENGTHS

WAVE LENGTHS

NEAR | MID | FAR

UV | W | IR

**CUSTOM OPTIONS TO FIT  
EVERY APPLICATION**

With a variety of diameters and lengths available, along with focal length and illumination options, you can have a borescope perfectly tailored to your specific inspection requirements.



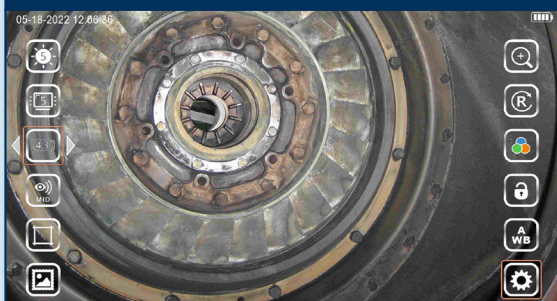
**UNRIVALED SERVICE AND  
EXPERTISE**

The VJ-4 is brought to you by the same team of borescope experts that changed the industry 15 years ago with the world's first mechanically articulating, joystick-controlled video borescope. Find out why we are the #1 seller of borescopes in the US.

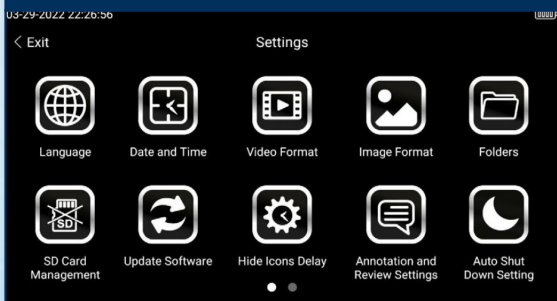
### EASY ORGANIZATION & STORAGE



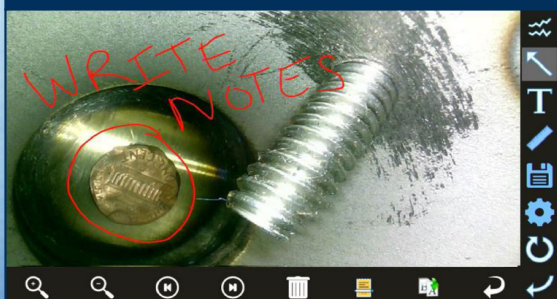
### INSTANT ACCESS TO KEY FUNCTIONS



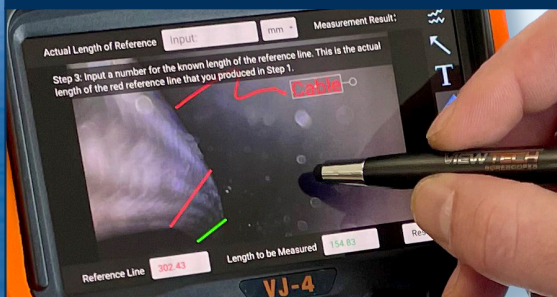
### WIDE RANGE OF SETTINGS



### ON-SCREEN ANNOTATION



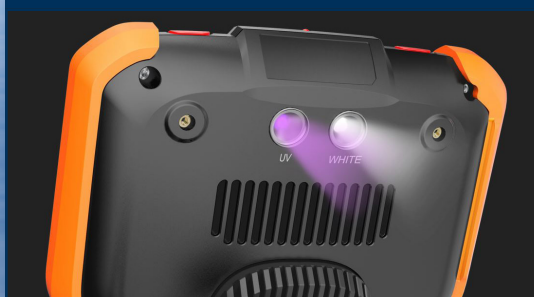
### TOUCH-SCREEN OR STYLUS INTERFACE



RUGGEDIZED CASE & ACCESSORIES ARE INCLUDED WITH EVERY BORESCOPE WE SELL



### UV AND WHITE LIGHT FLASHLIGHTS



### SELF SPOOLING HOLDER TUBE IN THE CASE



INSERTION TUBE	Outer Diameter	3.9mm
	Length	1.5m or 3.0m
	Exterior Material	Tungsten EasyGlide, crush-resistant
	Chemical Compatibility	Water, machine oil, heating oil, diesel, 3.5% saline concentrate
	Articulation Range	360° around, 170±10° backward (1.5m) 120±10° backward (3.0m)
OPTICS	Angle of View	110° (front) 110° (side)
	Depth of Field	8.0mm-100.0mm (front) 5.0mm-50mm (side)
	Effective Pixels	921,600 pixels
	Illumination Method	6 Super high-intensity white LEDs
	Illumination Output	Front ≤ 10,000lux Side ≤ 10,000lux
BASE UNIT	Display Monitor	5.5" OLED touch screen
	Articulation Control	Thumb-actuated, mechanical rocker
	Joystick Lock	Automatic
	Brightness Control	10-step LED brightness adjustment
	Control Buttons	Two multi-function mini joysticks and left/right buttons
	Playback	Photos, videos (w/wo audio), thumbnail view
	Audio / Microphone	3.5mm port
	Removable Storage	All media captured on removable SD Card. Base Unit has no internal media storage capabilities.
	Data I/O ports	SD card, HDMI, USB Type C
	Battery	Two 18650B PCB-Protected Li-ion batteries (rechargeable)
	Operating Method	One handed, portable
	Dimensions	13.6" x 6.2" x 7.3"
Weight	2.09 lbs. / .95 kg	
MENU FUNCTIONS & OPTIONS	User Interface	Pop-up menu operation, menu navigation, touchscreen
	File Management	Photo and video recording, playback, thumbnail preview, delete
	Image Control	Image freeze, image flip, zoom in/out
	Image Format	BMP, PNG or JPG
	Video Format	AVI or MP4
Language	English, French, Spanish	
OPERATING LIMITS	Run Time	≤ 3 Hours
	Operating Temp. Base Unit	-20 - 50°C, -4 - 122°F
	Operating Temp. Insertion Tube	-20 - 70°C, -4 - 158°F
	IP Rating, Insertion Tube	IP67