



WiFi Enabled  
(Optional)

HDMI Out

64GB SD Card and  
USB Connectivity

Picture-in-Picture  
Front & Side  
Camera Display

Video Start-Stop

Mini Joysticks  
For Easy Navigation

Ergonomic  
Pistol Grip  
Design

Rechargeable  
Li-ion Battery  
3 Hour Runtime

Detachable Base Plate  
(Magnetic Version Available)

Built-in Stylus Holder  
(Stylus Included)

On-Board Image Processing

2.5X Digital Zoom

HD OLED Touch Screen

Joystick-Controlled, 360°  
Direct Response Articulation

Image Capture Trigger

Tungsten Braided  
IP67 Insertion Tube

Dual Camera:  
Forward View  
and Side View  
Cameras



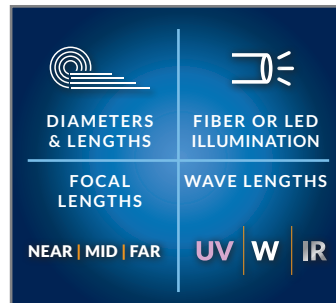
### MULTIPLE DIAMETERS AND LENGTHS

Available in lengths 1.0m to 8.0m. The dual camera assists in viewing straight ahead and 90 degrees. Users can switch between the two cameras while keeping the borescope inside the inspection area.



### INDUSTRY-FIRST MINI- JOYSTICKS

The VJ-4 user interface is designed to enable maximum functionality with minimal effort. Use the mini-joysticks OR touchscreen to navigate all menus and adjust all settings. No feature-rich borescope is easier or more intuitive to use.



### CUSTOM OPTIONS TO FIT EVERY APPLICATION

With a variety of diameters and lengths available, along with focal length and illumination options, you can have a borescope perfectly tailored to your specific inspection requirements.



### UNRIVALED SERVICE AND EXPERTISE

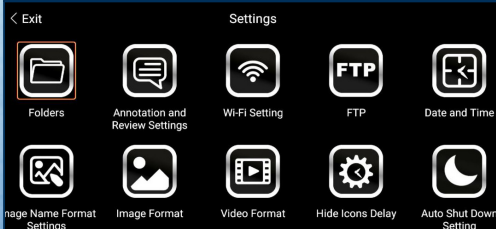
The VJ-4 is brought to you by the same team of borescope experts that changed the industry 15 years ago with the world's first mechanically articulating, joystick-controlled video borescope. Find out why we are the #1 seller of borescopes in the US.



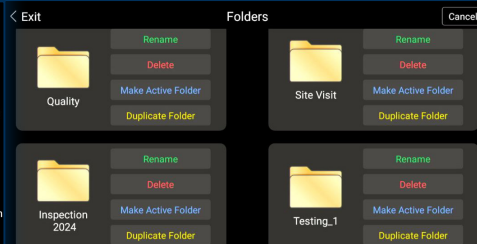


**RUGGEDIZED  
CASE & ACCESSORIES  
INCLUDED WITH EVERY  
BORESCOPE WE SELL**

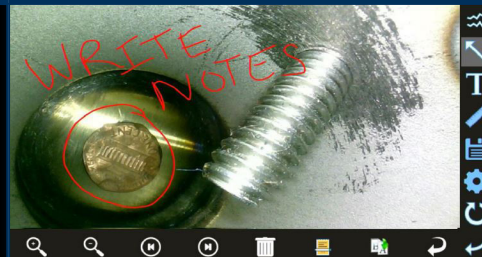
**WIDE RANGE OF SETTINGS**



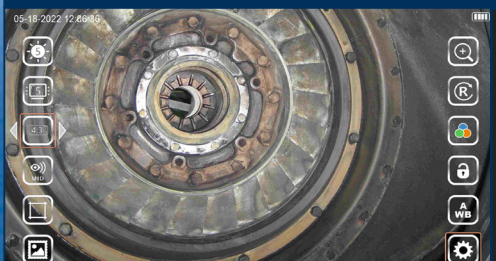
**EASY ORGANIZATION & STORAGE**



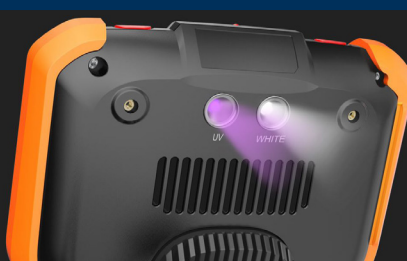
**ON-SCREEN ANNOTATION**



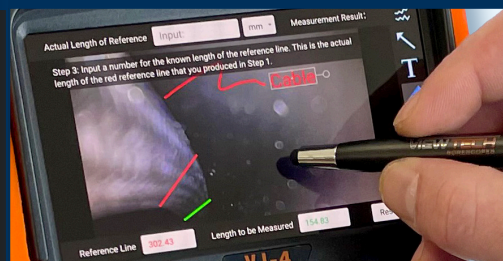
**INSTANT ACCESS TO KEY FUNCTIONS**



**UV AND WHITE LIGHT FLASHLIGHTS**



**TOUCH-SCREEN OR STYLUS INTERFACE**



		3.9mm LED FV & SV	3.9mm Fiber FV & SV	3.9mm Fiber FV / LED SV
INSERTION TUBE	Outer Diameter	3.9mm		
	Length	1.0m, 1.5m, 2.0m or 3.0m		
	Exterior Material	Tungsten EasyGlide, crush-resistant		
	Chemical Compatibility	Water, machine oil, heating oil, diesel, 3.5% saline concentrate		
	Articulation Range	360° around, 170±10° backward (1.0m & 1.5m) 150±10° backward (2.0m) 120±10° backward (3.0m)		
OPTICS	Angle of View	110° (front) 110° (side)	100° (front) 120° (side)	
	Depth of Field	8.0mm–100.0mm (front) 5.0mm–50mm (side)	8.0mm–150.0mm (front) 3.0mm–50mm (side)	
	Effective Pixels	Front: 921,600 pixels Side: 921,600 pixels	Front: 921,600 pixels Side: 160,000 pixel	Front: 921,600 pixels Side: 518,400 pixels
	Illumination Method	6 Super high-intensity white LEDs		
	Illumination Output	Front ≤ 10,000lux Side ≤ 10,000lux	Front ≤ 45,000lux Side ≤ 10,000lux	Front ≤ 50,000-70,000lux Side ≤ 13,000lux
BASE UNIT	Display Monitor	5.5" OLED touch screen		
	Articulation Control	Thumb-actuated, mechanical rocker		
	Joystick Lock	Automatic		
	Brightness Control	10-step LED brightness adjustment		
	Control Buttons	Two multi-function mini joysticks and left/right buttons		
	Playback	Photos, videos (w/wo audio), thumbnail view		
	Audio / Microphone	3.5mm port		
	Removable Storage	All media captured on removable SD Card. Base Unit has no internal media storage capabilities.		
	Data I/O ports	SD card, HDMI, USB Type C		
	Battery	Two 18650B PCB-Protected Li-ion batteries (rechargeable)		
	Operating Method	One handed, portable		
	Dimensions	13.6" x 6.2" x 7.3"		
	Weight	2.09 lbs. / .95 kg		
MENU FUNCTIONS & OPTIONS	User Interface	Pop-up menu operation, menu navigation, touchscreen		
	File Management	Photo and video recording, playback, thumbnail preview, delete		
	Image Control	Image freeze, image flip, zoom in/out		
	Image Format	BMP, PNG or JPG		
	Video Format	AVI or MP4		
	Language	English, French, Spanish		
OPERATING LIMITS	Run Time	≤ 3 Hours		
	Operating Temp. Base Unit	-20 – 50°C, -4 – 122°F		
	Operating Temp. Insertion Tube	-20 – 70°C, -4 – 158°F		
	IP Rating, Insertion Tube	IP67		