



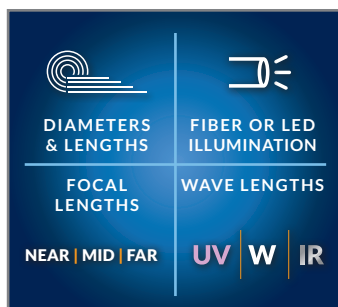
MULTIPLE DIAMETERS

Available in lengths from 1.0m to 8.0m to suit any application. All insertion tubes feature our patented EasyGlide, 4-layer Tungsten sheathing for smooth entry and exit, and are IP 67 rated for rugged durability.



INDUSTRY-FIRST MINI-JOYSTICKS

The VJ-4 user interface is designed to enable maximum functionality with minimal effort. Use the mini-joysticks OR touchscreen to navigate all menus and adjust all settings. No feature-rich borescope is easier or more intuitive to use.



CUSTOM OPTIONS TO FIT EVERY APPLICATION

With a variety of diameters and lengths available, along with focal length and illumination options, you can have a borescope perfectly tailored to your specific inspection requirements.



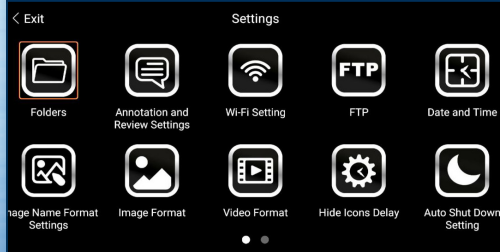
UNRIVALED SERVICE AND EXPERTISE

The VJ-4 is brought to you by the same team of borescope experts that changed the industry 15 years ago with the world's first mechanically articulating, joystick-controlled video borescope. Find out why we are the #1 seller of borescopes in the US.

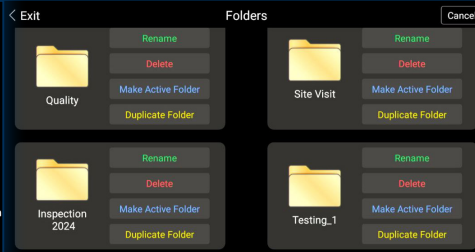


**RUGGEDIZED
CASE & ACCESSORIES
INCLUDED WITH EVERY
BORESCOPE WE SELL**

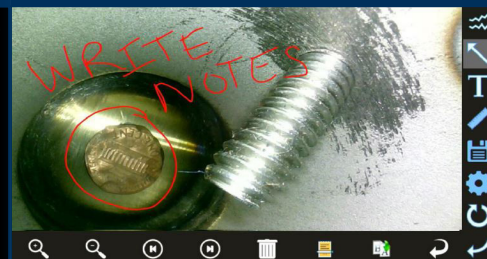
WIDE RANGE OF SETTINGS



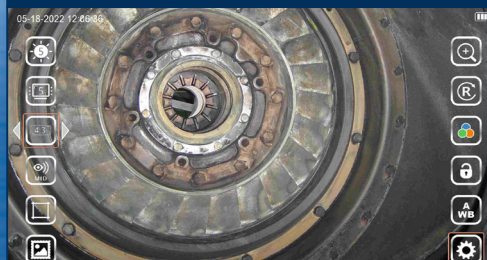
EASY ORGANIZATION & STORAGE



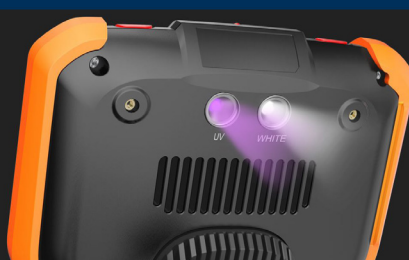
ON-SCREEN ANNOTATION



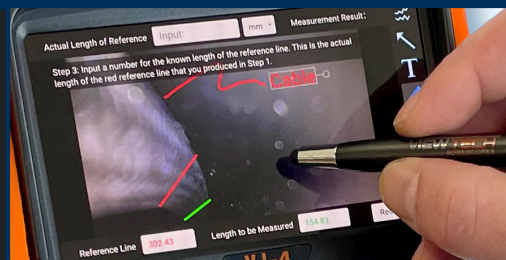
INSTANT ACCESS TO KEY FUNCTIONS

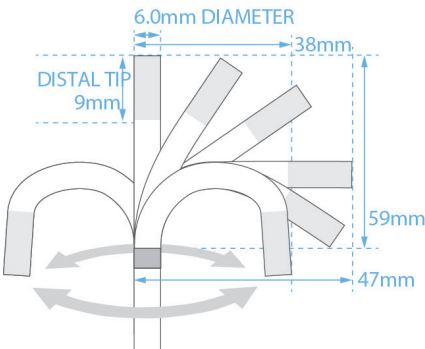


UV AND WHITE LIGHT FLASHLIGHTS



TOUCH-SCREEN OR STYLUS INTERFACE



| | | | |
|--------------------------|--------------------------------|--|---|
| INSERTION TUBE | Outer Diameter | 6.0mm |  |
| | Length | 1.5m, 3.0m, 5.0m or 8.0m | |
| | Exterior Material | Tungsten EasyGlide, crush-resistant | |
| | Chemical Compatibility | Water, machine oil, heating oil, diesel, 3.5% saline concentrate | |
| | Articulation Range | 360° around, 170±10° backward (1.5m) 150±10° backward (2.0m) 120±10° backward (3.0m) 100±10° backward (5.0m) 90±10° backward (8.0m) | |
| OPTICS | Angle of View | 100° (1.5m - 5.0m) 110° (8.0m High Definition) 120° (8.0m Standard Definition) | |
| | Depth of Field | 8.0mm - 100.0mm 7.0mm - 80.0mm (8.0m Standard Definition) | |
| | Effective Pixels | 921,600 pixels (1.5m, 3.0m, 5.0m) 921,600 pixels (8.0m High Definition) 307,200 pixels (8.0m Standard Definition) | |
| | Illumination Method | 6 Super high-intensity white LEDs | |
| | Illumination Output | ≤ 20,000lux | |
| BASE UNIT | Display Monitor | 5.5" OLED touch screen | |
| | Articulation Control | Thumb-actuated, mechanical rocker | |
| | Joystick Lock | Automatic | |
| | Brightness Control | 10-step LED brightness adjustment | |
| | Control Buttons | Two multi-function mini joysticks and left/right buttons | |
| | Playback | Photos, videos (w/wo audio), thumbnail view | |
| | Audio / Microphone | 3.5mm port | |
| | Removable Storage | All media captured on removable SD Card. Base Unit has no internal media storage capabilities. | |
| | Data I/O ports | SD card, HDMI, USB Type C | |
| | Battery | Two 18650B PCB-Protected Li-ion batteries (rechargeable) | |
| | Operating Method | One handed, portable | |
| | Dimensions | 13.6" x 6.2" x 7.3" | |
| | Weight | 2.09 lbs. / .95 kg | |
| MENU FUNCTIONS & OPTIONS | User Interface | Pop-up menu operation, menu navigation, touchscreen | |
| | File Management | Photo and video recording, playback, thumbnail preview, delete | |
| | Image Control | Image freeze, image flip, zoom in/out | |
| | Image Format | BMP, PNG or JPG | |
| | Video Format | AVI or MP4 | |
| | Language | English, French, Spanish | |
| OPERATING LIMITS | Run Time | ≤ 3 Hours | |
| | Operating Temp. Base Unit | -20 - 50°C, -4 - 122°F | |
| | Operating Temp. Insertion Tube | -20 - 70°C, -4 - 158°F | |
| | IP Rating, Insertion Tube | IP67 | |