



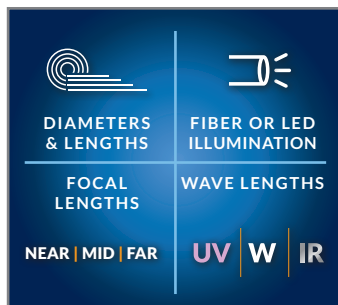
MULTIPLE DIAMETERS

Available in lengths from 1.0m to 8.0m to suit any application. All insertion tubes feature our patented EasyGlide, 4-layer Tungsten sheathing for smooth entry and exit, and are IP 67 rated for rugged durability.



INDUSTRY-FIRST MINI-JOYSTICKS

The VJ-4 user interface is designed to enable maximum functionality with minimal effort. Use the mini-joysticks OR touchscreen to navigate all menus and adjust all settings. No feature-rich borescope is easier or more intuitive to use.



CUSTOM OPTIONS TO FIT EVERY APPLICATION

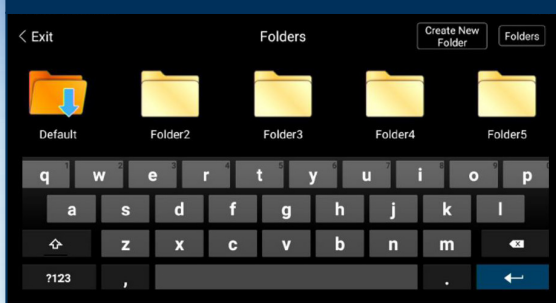
With a variety of diameters and lengths available, along with focal length and illumination options, you can have a borescope perfectly tailored to your specific inspection requirements.



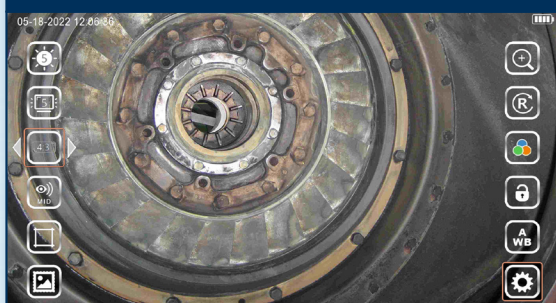
UNRIVALED SERVICE AND EXPERTISE

The VJ-4 is brought to you by the same team of borescope experts that changed the industry 15 years ago with the world's first mechanically articulating, joystick-controlled video borescope. Find out why we are the #1 seller of borescopes in the US.

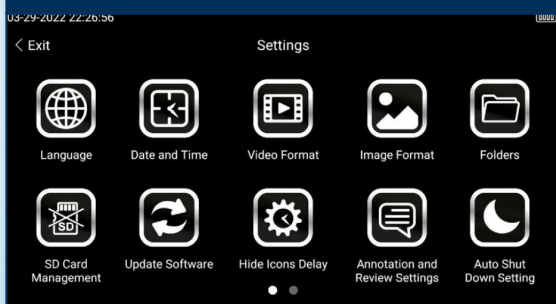
EASY ORGANIZATION & STORAGE



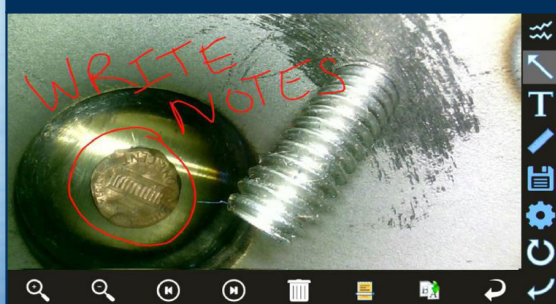
INSTANT ACCESS TO KEY FUNCTIONS



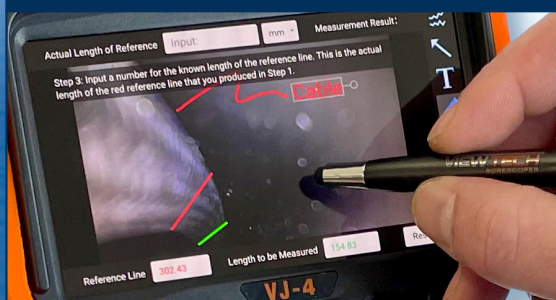
WIDE RANGE OF SETTINGS



ON-SCREEN ANNOTATION



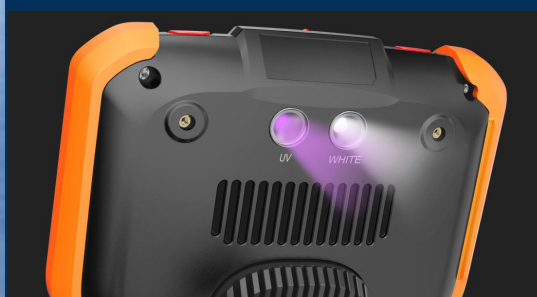
TOUCH-SCREEN OR STYLUS INTERFACE



RUGGEDIZED CASE & ACCESSORIES ARE INCLUDED WITH EVERY BORESCOPE WE SELL



UV AND WHITE LIGHT FLASHLIGHTS



SELF SPOOLING HOLDER TUBE IN THE CASE



INSERTION TUBE	Outer Diameter	6.0mm	
	Length	1.5m, 3.0m, 5.0m or 8.0m	
	Exterior Material	Tungsten EasyGlide, crush-resistant	
	Chemical Compatibility	Water, machine oil, heating oil, diesel, 3.5% saline concentrate	
	Articulation Range	360° around, 170±10° backward (1.5m) 150±10° backward (3.0m) 100±10° backward (5.0m) 100±10° backward (8.0m)	
OPTICS	Field of View	80° x 60°	
	Depth of Field	8.0mm–100.0mm	
	Effective Pixels	921,600 pixels (1.5m, 3.0m, 5.0m) 307,200 pixels (8.0m)	
	Illumination Method	6 Super high-intensity white LEDs	
	Illumination Output	≤ 20,000lux	
BASE UNIT	Display Monitor	5.5" OLED touch screen	
	Articulation Control	Thumb-actuated, mechanical rocker	
	Joystick Lock	Automatic	
	Brightness Control	10-step LED brightness adjustment	
	Control Buttons	Two multi-function mini joysticks and left/right buttons	
	Playback	Photos, videos (w/wo audio), thumbnail view	
	Audio / Microphone	3.5mm port	
	Internal storage	32 GB SD Card 10,000 photos, 8 hours video	
	Data I/O ports	SD card, HDMI, USB Type C	
	Battery	Two 18650B PCB-Protected Li-ion batteries (rechargeable)	
	Operating Method	One handed, portable	
	Dimensions	13.6" x 6.2" x 7.3"	
	Weight	2.09 lbs. / .95 kg	
MENU FUNCTIONS & OPTIONS	User Interface	Pop-up menu operation, menu navigation, touchscreen	
	File Management	Photo and video recording, playback, thumbnail preview, delete	
	Image Control	Image freeze, image flip, zoom in/out	
	Image Format	BMP, PNG or JPG	
	Video Format	AVI or MP4	
	Language	English, French, Spanish	
OPERATING LIMITS	Run Time	≤ 3 Hours	
	Operating Temp. Base Unit	-10 – 50°C, -5 – 122°F	
	Operating Temp. Insertion Tube	-20 – 60°C, -4 – 140°F	
	IP Rating, Insertion Tube	IP67	