

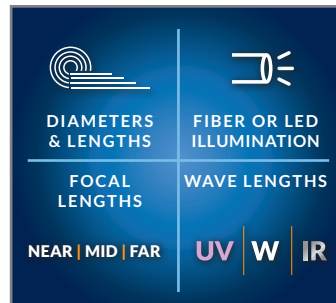
MULTIPLE DIAMETERS AND LENGTHS

Available in lengths 1.0m to 8.0m. The dual camera assists in viewing straight ahead and 90 degrees. Users can switch between the two cameras while keeping the borescope inside the inspection area.



INDUSTRY-FIRST MINI-JOYSTICKS

The VJ-4 user interface is designed to enable maximum functionality with minimal effort. Use the mini-joysticks OR touchscreen to navigate all menus and adjust all settings. No feature-rich borescope is easier or more intuitive to use.



CUSTOM OPTIONS TO FIT EVERY APPLICATION

With a variety of diameters and lengths available, along with focal length and illumination options, you can have a borescope perfectly tailored to your specific inspection requirements.



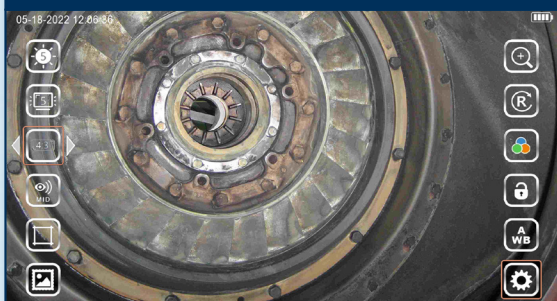
UNRIVALED SERVICE AND EXPERTISE

The VJ-4 is brought to you by the same team of borescope experts that changed the industry 15 years ago with the world's first mechanically articulating, joystick-controlled video borescope. Find out why we are the #1 seller of borescopes in the US.

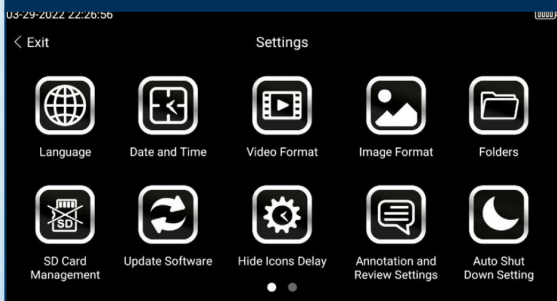
EASY ORGANIZATION & STORAGE



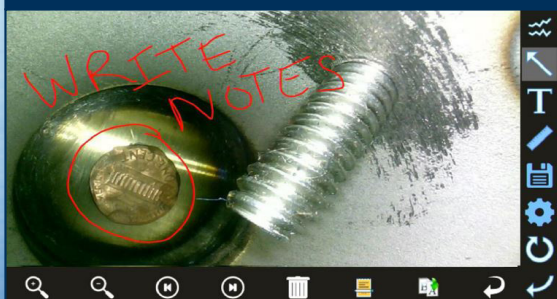
INSTANT ACCESS TO KEY FUNCTIONS



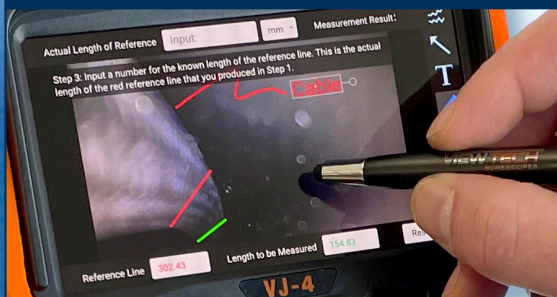
WIDE RANGE OF SETTINGS



ON-SCREEN ANNOTATION



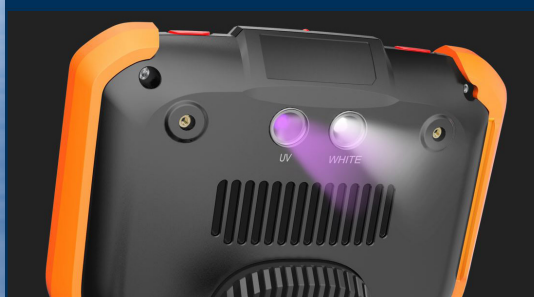
TOUCH-SCREEN OR STYLUS INTERFACE



RUGGEDIZED CASE & ACCESSORIES ARE INCLUDED WITH EVERY BORESCOPE WE SELL



UV AND WHITE LIGHT FLASHLIGHTS



SELF SPOOLING HOLDER TUBE IN THE CASE



INSERTION TUBE	Outer Diameter	2.8mm	3.9mm	6.0mm	8.0mm
	Length	1.0, 1.5m or 2.0m	1.5m or 3.0m	1.5m or 3.0m	8.0m
	Exterior Material	Tungsten EasyGlide, crush-resistant			
	Chemical Compatibility	Water, machine oil, heating oil, diesel, 3.5% saline concentrate			
	Articulation Range	360° around, 130±10° backward (1.0m) 120±10° backward (1.5m) 110±10° backward (2.0m)	360° around, 170±10° backward (1.5m) 120±10° backward (3.0m)		360° around, 90±10° backward
OPTICS	Angle of View	120° (front) 120° (side)	110° (front) 110° (side)	100° (front) 100° (side)	
	Depth of Field	3.0mm-100.0mm (front) 3.0mm-50mm (side)	8.0mm-100.0mm (front) 5.0mm-50mm (side)		8.0mm-100.0mm (front) 8.0mm-50mm (side)
	Effective Pixels	160,00 pixels	921,600 pixels		
	Illumination Method	6 Super high-intensity white LEDs			
	Illumination Output	Front ≤ 6,000lux Side ≤ 6,000lux	Front ≤ 10,000lux Side ≤ 10,000lux	Front ≤ 30,000lux Side ≤ 30,000lux	
BASE UNIT	Display Monitor	5.5" OLED touch screen			
	Articulation Control	Thumb-actuated, mechanical rocker			
	Joystick Lock	Automatic			
	Brightness Control	10-step LED brightness adjustment			
	Control Buttons	Two multi-function mini joysticks and left/right buttons			
	Playback	Photos, videos (w/wo audio), thumbnail view			
	Audio / Microphone	3.5mm port			
	Removable Storage	All media captured on removable SD Card. Base Unit has no internal media storage capabilities.			
	Data I/O ports	SD card, HDMI, USB Type C			
	Battery	Two 18650B PCB-Protected Li-ion batteries (rechargeable)			
	Operating Method	One handed, portable			
	Dimensions	13.6" x 6.2" x 7.3"			
Weight	2.09 lbs. / .95 kg				
MENU FUNCTIONS & OPTIONS	User Interface	Pop-up menu operation, menu navigation, touchscreen			
	File Management	Photo and video recording, playback, thumbnail preview, delete			
	Image Control	Image freeze, image flip, zoom in/out			
	Image Format	BMP, PNG or JPG			
	Video Format	AVI or MP4			
Language	English, French, Spanish				
OPERATING LIMITS	Run Time	≤ 3 Hours			
	Operating Temp. Base Unit	-20 - 50°C, -4 - 122°F			
	Operating Temp. Insertion Tube	-20 - 70°C, -4 - 158°F			
	IP Rating, Insertion Tube	IP67			