



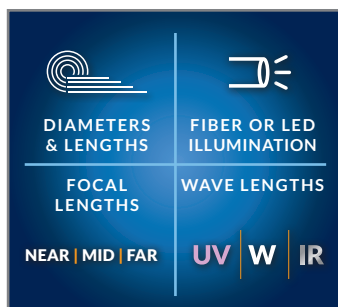
## MULTIPLE DIAMETERS

Available in lengths from 1.0m to 8.0m to suit any application. All insertion tubes feature our patented EasyGlide, 4-layer Tungsten sheathing for smooth entry and exit, and are IP 67 rated for rugged durability.



## INDUSTRY-FIRST MINI-JOYSTICKS

The VJ-4 user interface is designed to enable maximum functionality with minimal effort. Use the mini-joysticks OR touchscreen to navigate all menus and adjust all settings. No feature-rich borescope is easier or more intuitive to use.



## CUSTOM OPTIONS TO FIT EVERY APPLICATION

With a variety of diameters and lengths available, along with focal length and illumination options, you can have a borescope perfectly tailored to your specific inspection requirements.



## UNRIVALED SERVICE AND EXPERTISE

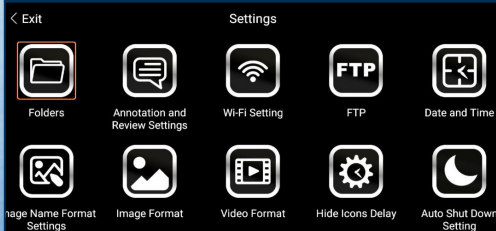
The VJ-4 is brought to you by the same team of borescope experts that changed the industry 15 years ago with the world's first mechanically articulating, joystick-controlled video borescope. Find out why we are the #1 seller of borescopes in the US.



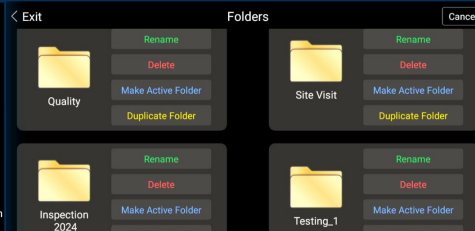


**RUGGEDIZED  
CASE & ACCESSORIES  
INCLUDED WITH EVERY  
BORESCOPE WE SELL**

**WIDE RANGE OF SETTINGS**



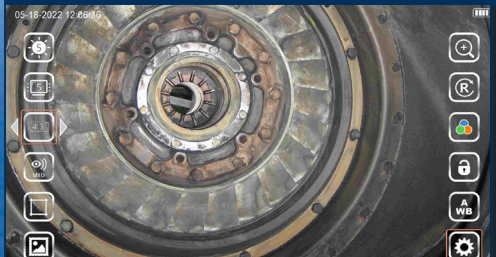
**EASY ORGANIZATION & STORAGE**



**ON-SCREEN ANNOTATION**



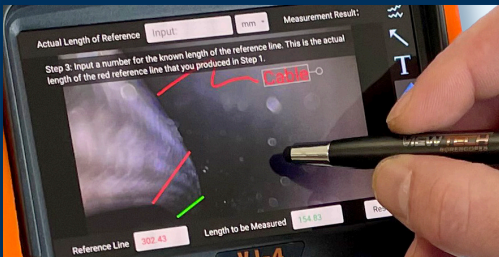
**INSTANT ACCESS TO KEY FUNCTIONS**



**UV AND WHITE LIGHT FLASHLIGHTS**



**TOUCH-SCREEN OR STYLUS INTERFACE**



INSERTION TUBE	Outer Diameter	3.9mm	6.0mm	6.0mm Side View Only
	Length	1.0, 1.5, 2.0m	1.5, 2.0, 3.0m	
	Exterior Material	Tungsten EasyGlide, crush-resistant		
	Chemical Compatibility	Water, machine oil, heating oil, diesel, 3.5% saline concentrate		
	Articulation Range	360° around, 170±10° backward (1.0 & 1.5m) 150±10° backward (2.0m)	360° around, 170±10° backward (1.5m) 150±10° backward (2.0m) 120±10° backward (3.0m)	
OPTICS	Angle of View	120°	100°	
	Depth of Field	3 - 50mm	8-100mm	
	Effective Pixels	518,400 pixels	921,600 pixels	
	Illumination Method	Distal LED & Fiber Ultraviolet	Fiber LED & Distal Ultraviolet	Distal LED & Ultraviolet
	[mW]	W: 10000lux, 35mA UV: Wavelength: 365±5nm, 600mA at 1-inch distance, > 2000µW/cm²	W: 50000lux,600mA UV: Wavelength: 365±5nm, 80mA at 2-inch distance, > 1200µW/cm²	W: 70000lux, 90mA UV: Wavelength: 365±5nm, 80mA at 2-inch distance, > 1200µW/cm²
BASE UNIT	Display Monitor	5.5” OLED touch screen		
	Articulation Control	Thumb-actuated, mechanical rocker		
	Joystick Lock	Automatic		
	Brightness Control	10-step UV brightness adjustment		
	Control Buttons	Two multi-function mini joysticks and left/right buttons		
	Playback	Photos, videos (w/wo audio), thumbnail view		
	Audio / Microphone	3.5mm port		
	Removable Storage	All media captured on removable SD Card. Base Unit has no internal media storage capabilities.		
	Data I/O ports	SD card, HDMI, USB Type C		
	Battery	Two 18650B PCB-Protected Li-ion batteries (rechargeable)		
	Operating Method	One handed, portable		
	Dimensions	13.6” x 6.2” x 7.3”		
	Weight	2.09 lbs. / .95 kg		
MENU FUNCTIONS & OPTIONS	User Interface	Pop-up menu operation, menu navigation, touchscreen		
	File Management	Photo and video recording, playback, thumbnail preview, delete		
	Image Control	Image freeze, image flip, zoom in/out		
	Image Format	BMP, PNG or JPG		
	Video Format	AVI or MP4		
	Language	English, French, Spanish		
OPERATING LIMITS	Run Time	≤ 3 Hours		
	Operating Temp. Base Unit	-20 – 50°C, -4 – 122°F		
	Operating Temp. Insertion Tube	-20 – 70°C, -4 – 158°F		
	IP Rating, Insertion Tube	IP67		