

ARTICULATING VIDEO BORESCOPE FOR OIL & GAS

THE BORESCOPE
YOU NEED TO SEE

“Even though we only took delivery of our [...] borescope recently, it has already proven very useful in diagnosing and documenting issues with some of our equipment. It is easy to use, provides high quality images, and is now a standard part of our troubleshooting toolkit.”

SENIOR RELIABILITY ENGINEER, PETROCHEMICAL COMPANY

“This was a great addition to our tool cage. We had it in use ten minutes after arrival and it's been busy ever since.”

RICHARD, MAINTENANCE SUPERVISOR



Stator Degradation



Internal Inspection

COMBUSTION CHAMBER INSPECTION

Use the VJ-3 to access and document inspection of the internal condition of combustion chambers, piston domes, and valves. Effortlessly take photos by pulling the image capture trigger. Record video by pressing a button with your thumb. Lighting controls are also nearby.

GEAR BOX INSPECTION

Utilize the VJ-3's joystick-controller to steer and point the camera at exactly the right area to inspect gear teeth, races, and bearings. With built-in image capture, you can document the condition of problem areas over time and make a rebuild/replacement decision before a catastrophic failure.

INTERNAL WELD INSPECTION

Weld integrity is critical to the safety and functionality of your machine. Using a VJ-3 to inspect internal welds reduces downtime and costs by detecting and correcting issues such as cracks or misalignment.

SLURRY PUMP INSPECTION

The periodic maintenance of pumps usually requires shutting down an entire process. With the VJ-3, all you need is a small access port to perform RVI on every component. No tear down needed.

MANIFOLD INSPECTION

The VJ-3 is super-slim and extremely portable, allowing for stress-free remote visual inspections to check for defects and surface finish irregularities in various types of manifolds.

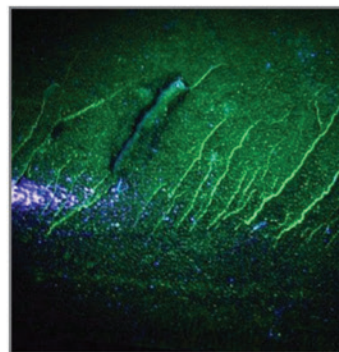
ARTICULATING VIDEO BORESCOPE

**MULTIPLE DIAMETERS**

Available in lengths from 1.0m to 8.0m to suit any application. All insertion tubes feature our patented EasyGlide, 4-layer Tungsten sheathing for smooth entry and exit, and are IP 67 rated for rugged durability. **Now available in 2.2mm diameter.**

**DUAL CAMERA (DC)**

The VJ-3 Dual Camera is a 6.0mm diameter and has lengths of 1.5m, 3.0m, 5.0m, or 8.0m. The DC assists in viewing forward and 90 degrees. Switch between the two cameras while keeping the borescope inside the inspection area.

**ULTRAVIOLET (UV)**

The VJ-3 UV borescope is a 6.0mm diameter and has lengths of 1.0m and 3.0m. The UV borescope facilitates endoscopic dye penetrant testing by detecting surface defects such as micro-fractures, delamination, seams, incomplete fusion and other defects in non-porous materials.

**INFRARED (IR)**

The VJ-3 IR borescope is a 6.0mm diameter. Available in lengths of 1.0m and 2.0m. Switch between white LED light or IR light. The IR can light a dark area without being detected by the human eye, allowing for undetectable picture and video capture.